

Windward Orchid News
Windward Orchid Society, Inc.
P.O. Box 23
Kaneohe, HI 96744

RETURN SERVICE REQUESTED

NONPROFIT ORG
U.S. POSTAGE
PAID
KANEEOHE, HI
PERMIT NO. 48

Saturday, March 20th
WOS Spring Food Drive
and Plant Give Away





Windward Orchid News

Published monthly by the Windward Orchid Society, Inc., a non-profit organization
Website: www.windwardorchidsociety.org Email: windwardorchidsociety@yahoo.com



WOS SPRING FOOD DRIVE & PLANT GIVEAWAY, MARCH 20, 2021

The WOS Christmas food drive and plant giveaway was extremely successful: we collected over 1000 lbs. of food, we distributed plants, and we had a chance to see each other, however briefly. So, in place of our 2021 Spring Show, we are sponsoring our second food drive and plant giveaway for members and friends of WOS. We will give one plant box (with at least one blooming orchid) per donation of five or more items; no plant exchanges; plant boxes while supplies last. Masks and social distancing are required.

The following items are suggested (please no pasta or creamed soups): spaghetti sauces; cup noodles; ramen saimin (chicken or beef); canned or cups of fruit; canned corn, pork & beans, chili, beef stew, Spaghetti Os, chicken noodle soup, tuna, corned beef, vienna sausage, Spam. Toiletries are also welcome: toothpaste, toothbrushes, shampoo, conditioner, bath soap, body wash, razors, Q-tips.

St. Anthony's Catholic Church Food Pantry in Kailua will distribute the donated items to needy Windward residents. **This is once again a win-win: your gift will help people in need and in turn you will receive orchid and perhaps other plants to add to your collection.**

When: Saturday, March 20, 1:00 to 5:00 pm
Where: St. John's Lutheran Church, 1004 Kailua Road, Kailua

A Message From Our Director

Aloha WOS Members –

March is normally a month of activity where we would be getting ready for our annual Spring Show. Alas, we will not be able to gather for a Spring Show again this year. BUT, WE WILL be having another Food Drive/Plant Giveaway event on March 20th. See details in this newsletter.

One of our WOS mission statements is to support our Windward community. So, this food drive/plant giveaway is a very important event. Our main mission strives to educate the community about orchid culture, but you can't eat orchids. Whether it is obvious or not, there are families out there that DO need this different type of support during these tough times. SO PLEASE, do the best you can, and help support another food drive and get some plants to add to your collection in the process.

Meanwhile, your WOS Board has resumed Board meetings via Zoom, and we will strive to keep this club moving forward. WE WILL GET THROUGH THIS. Together, with everyone's help, we will come out of this as best we can! Many things depend on circumstances that we do not control. This includes vaccine distribution, the schools re-opening so that we can rent space for meetings, and a myriad of other restrictions. The MOST IMPORTANT thing is that we want to keep everyone safe and healthy and we will make sure that we do not do anything that will put any of our members at risk.

To all of you, please stay safe & healthy, and we WILL meet again as soon as it is safe to do so!

MAHALO!

Sheron Harwood, Director

Orchid Tip of the Month by Scot Mitamura

March is usually our Spring Show season, and many of our normal show orchids will be coming into bloom. Unfortunately, for the second year in a row, we will not have our annual Spring Show. I am hopeful that this will be our last canceled show, as I feel that by next year, we will certainly have control over this virus.

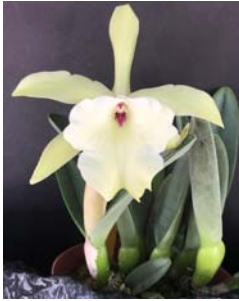
Since the pandemic started, I have adopted a habit of preparing my orchids like a show is coming up. That means making an effort to stake and groom my orchids prior to blooming. Spraying my spikes/ buds to prevent flower thrip damage. Inspecting them for insects, slugs/snails, mites, scales and weeds. Staking them so that the flowers display well and the plants don't topple over. Removing old leaf and flower sheaths, dead leaves and other debris, and trimming dying or damaged leaves. Then, bring these beautiful orchids indoors to display and enjoy.

If we can adopt this behavior throughout the year, we can stay on top of our orchid maintenance, instead of reacting to problem situations that occur because of a lack of attention. What a difference this is making in the general health of my orchids! Not only have I gotten a record number of flowers, but the size and quality of the flowers have greatly improved. I feel that by simply putting in this extra time and effort, has made me a better orchid grower, plus it's been great therapy!

Instead of our Spring Show, the WOS board has planned another food drive that will be held on March 20th. Please visit us and bring food donations for this worthy event. We will be giving out boxes of orchids again, even blooming ones! I will be there too and I would be happy to answer any orchid related questions you may have. So please stop by, it would be nice to see everyone.

Aloha,
Scot

A Sampling of the Contributions by our Members to
ORCHIDS UNMASKED and **ORCHID E.R.** at
www.WindwardOrchidSociety.Org



**By
Walter
Hiraishi**



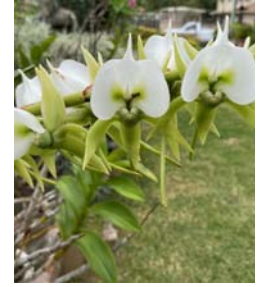
**By
Patti
Kawahakui**



**By
Roselani
Nakoa**



**By
CJ
Kalopodes**



**By
Sherry
Nakoa**

Mahalo Nui Loa to the following members who sent in contributions in February.

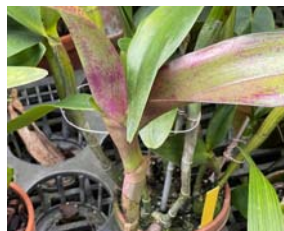
Wanda Chang, Walter Hiraishi, CJ Kalopodes, Patti Kawahakui, Roselani Nakoa, Sherry Nakoa, Barbara Pence, Kimberly Way, and our Orchid Doctor: Scot Mitamura.

Visit our website for information on these lovely orchids. Contributions for March are welcome at : ([email address on hard copy only](#)).

Orchid E.R. Recent Cases—Remedies Are Explained On Our Website



Wanda Chang
Should I cut the keiki off & pot them separately?



Pattie Kawahakui
New growth has funny color leaves. What should I do?



Barbara Pence
It was infested with something. Would sure appreciate your diagnosis.



Kimberly Way
Is this a bacterial brown spot on my two phalaenopsis?

Having trouble emailing your orchid picture? Send an email without a picture to WOS808@yahoo.com for help.

Because we have long serving Board Members stepping down, the search is on for other members to step up.

Due to changes in the lives of some of our Board Members, the following positions are now open:

President, and Recording Secretary. Then, at our next election, we will need someone to produce our newsletters. Please contact us at ([email address on hard copy only](#)) for more information on how you might fill one of these vacancies.

Windward Orchid Society Cookbook, 2nd Edition needs your recipes.

Please help us create a 2nd Edition of our popular cookbook.

Email your favorite recipes to ([email address on hard copy only](#)).

**WOS
Corner**

**WOS Officers 2019-2021: Acting President Karen Kim Vice-President Karen Kim Recording Secretary (Vacancy)
 Treasurer Ariel Harwood Corresponding Secretary Deborah Collins Trustees: (2019-2022) Arthur Nakagawa Toni Walker
 Fred Collins (2018-2021) Duncan Chun Wendy Saito Dot Sakamoto (2017-2020) Steve Canham C.J. Kalopodes
 Scot Mitamura Director Sheron Harwood Membership Grace Nishigaya Hospitality/Refreshments (Vacancy)**

Mail correspondence to: Windward Orchid Society, Inc. P.O. Box 23 Kaneohe, Hawaii 96744

The WOS meets on the first Wednesday of every month at the King Intermediate School Cafeteria (except in June & December), unless otherwise rescheduled by a pandemic.