



September 2005

Vol. 9, Issue 9

Windward Orchid News

Published monthly by the Windward Orchid Society, Inc., a non-profit organization

Windward Orchid Society's Next Meeting is scheduled for:

Wednesday, September 7, 2005

7:30 p.m. in the Benjamin Parker School Cafeteria

✂ The Orchid Workshop with Scot Mitamura starts at 7:00 p.m.

✂ Anyone entering a plant for AOS judging should have it on the cafeteria's stage by 7:15 p.m.

Our Guest Speaker will be **Scot Mitamura & Herb Lau**

Have you ever wondered why your blooms sometimes face the wrong way or why Scot's plants always look so perfect - well, come to the meeting to learn Scot's secrets on grooming and staking your plants. Then, Herb Lau will have a hands-on presentation on how to make wire hangers. Herb is a Lifetime member of the Society and a retired carpenter from Dick Pacific Co. In 1983, Herb became interested in orchids when he wanted to find out why his wife's plants stopped blooming. Herb loves all kinds of orchids and has been an active and valuable member of the Society. He has been instrumental in the planning, construction and set-up of many of our shows and show displays. His greatest achievement has been in receiving the coveted award of Orchidist of the Year.

Please bring with you to the meeting: pliers (preferably long-nose) and a plastic or clay pot (whatever you prefer to grow your orchids in). Instead of a plant, you'll receive a secret tool to make hangers.

WOS Officers

President
Susan Lim
Vice-President
Dorothy Sakamoto
Recording Secretary
Karen Kim
Treasurer
Sheron Harwood
Corresponding Secretary
Rae Ordinado

Trustees

Ed Catrett
David Kagawa
May Kaneshiro
Adam Kono
Scot Mitamura
Grace Nishigaya
Curtis Rodrigues
Kathy Tonokawa
Emily Yamada

Director

Larry Kamiya

Membership

Ruby Hiraishi

Hospitality

Fran Craft

WELCOME NEW MEMBER

✱ Kenneth Hashizume

LIFETIME MEMBERS

✱ Veronica Teixeira

✱ Lorenzo Ordinado

MANY THANKS

We would like to thank

Dick Ekimoto

for donating easels to the Society.

Upcoming Events:

- ♦ October 5, 2005
General Membership Meeting
- ♦ October 14-16, 2005
Honolulu Orchid Society
Show, Neil Blaisdell Center,
Exhibition Hall
- ♦ November 2, 2005
Auction Nite

WOS Show Theme Contest

Member's Name: _____

Theme Suggestion(s): _____

Cut and mail to: Windward Orchid Society, Inc. P.O. Box 23, Kaneohe, HI 96744
or drop off at our next meeting. **Deadline for entry is Sept. 7, 2005.**

Culture Awards from the August General Membership Meeting

Novice Division



Plant Name: Alcra. Sunday Best Muffin AM/AOS

Owner: Andi VanderVoort

2nd Place:

Plant Name: Lctna. Happy Face 'H&R' (Lctna. Peggy San x Lc. Mari's Song)

Owner: Adam Kono

Intermediate Division



Plant Name: Encyclia Radiatum

Owner: Yuri Simon

2nd Place:

Plant Name: Blc. Memorial Edward Wong

Owner: Clem Roldan

Masters Division



Plant Name: Pot. San Damiano 'Halona'

Owner: Ed Catrett

2nd Place:

Plant Name: Milt. Ann Warne

Owner: Dorothy Sakamoto

Leeward Orchid and Plant Show



The theme for the 54th Leeward Orchid and Plant Show was "Dedicated to Our Kupunas" and held on August 5-7, 2005 at the Waipahu High School Cafeteria. The co-chairs for the show were Betty Oshima and Marlene Lau. Our display consisted of a wahine kupuna sitting in a rocking chair in her greenhouse and enjoying the beauty of her blooming orchids. Hope you were able to see our display at the show!

Although our display didn't place, the following members won show trophy awards:

- *Best Other Color Cattleya:* Blc Owen Holmes (Mendenhall) - Scot & Karen Mitamura. This was the plant that won Scot an AOS award at the last meeting.
- *Best Miltonia:* Milt. Ann Warne - Stella Sumida
- *Best Paphiopedilum:* Paph. Magic Lantern - Randy Tajima

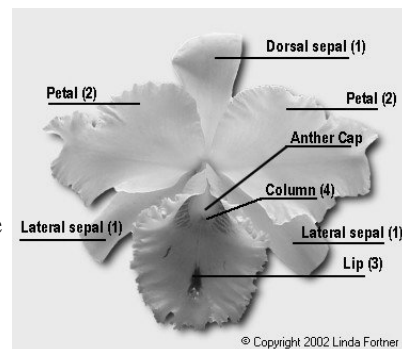
The following members came out to help set-up and/or breakdown the display: Betty Oshima, Marlene and Herb Lau, Susan Lim, Dorothy Sakamoto, Wilbur Chang, Scot Mitamura, Walter and Emily Yamada, May Kaneshiro, Bill and Hilda Takamatsu, Itsuo and Kathy Tonokawa, Walter and Ruby Hiraishi, Karen Kim and Lorenzo and Rae Ordinado.



Co-chairs Betty Oshima and Marlene Lau.

Anatomy of an Orchid

1. **Sepals** - Although they may look like petals, they are actually the glorified remains of the flower bud. There are usually three of approximately equal size. The sepals are the protective cover of the flower bud. When the flower opens, the sepals may become enlarged and colored. In most species, the sepals are equal sized and look like petals. In some species, however, the top, or "dorsal" sepal becomes very large and showy, the two lower "lateral" sepals are sometimes fused into one structure, and in other species all three sepals are fused forming a bell-shaped structure around the flower. In some species, the display of the sepals completely overwhelm the actual flower.



2. **Petals** - Orchids always have three petals. Two are "normal," and the third becomes a highly specialized structure called a lip. The two lateral petals flank the greatly enlarged flamboyant bottom petal (lip or labellum) which is usually highly modified to attract and, in some cases, trap potential pollinators

3. **Lip or Labellum** - The lower petal of an orchid. Used by the flower to provide a 'landing platform' for its pollinator. The lip may be differently colored or marked, ruffled or pouch shaped, decorated with crests, tails, horns, fans, warts, hairs, teeth, or other decorations attractive to their selected pollinator.

4. **Column** - A finger-like structure that carries the orchid's reproductive organs--the stigmatic surface (female organs) and the pollinia (male organs) located under the anther cap (operculum).

The orchid's reproductive organs are combined into a single column (a *gynostemium*) unlike the usually separate male stamen/anther and female pistil/stigma configurations of other flowers. This is the primary identification feature of an orchid. At the top of the column is the male anther which contains packets of pollen called pollinia. Below the anther is the stigma, a shallow, usually sticky cavity in which the pollen is placed for fertilization. There is a small growth, called the *rostellum* which acts as a protective barrier to prevent self pollination. Some species produce separate male and female flowers to prevent self pollination.

The overall flower shape is characteristically bilaterally symmetrical (the left and right halves of the blossom are mirror images), a necessity for reliable pollination by bees.

In the bud stage, the lip is the uppermost petal. In most (but not all) orchids, as the flower opens, the flower twists 180° around its flower stalk to position the lip on the bottom. This unique process is called *resupination*. Some orchid flowers remain "upside down" or *non-resupinate* while other flowers will rotate in a complete 360° circle ending back in the original upside position!

Taken from: www.orchidlady.com

It's time to renew your WOS Membership! Don't let it expire!

Please return this form and payment by **October 31, 2005.**

✂

Renewal Application

Mail to: Windward Orchid Society, Inc.
P.O. Box 23 Kaneohe, HI 96744

Name: _____

Address: _____

City: _____ State: _____ Zip: _____

Phone No: _____ Cell Phone: _____ Work Phone: _____

E-mail Address: _____

Amount Enclosed:

- | | |
|---|----------|
| <input type="checkbox"/> Regular Membership (July 2005 to June 2006) | \$20.00 |
| <input type="checkbox"/> Regular and Associate (Spouse) Membership (July 2005 to June 2006) | \$30.00 |
| <input type="checkbox"/> Associate (Spouse) Membership (July 2005 to June 2006) | \$10.00 |
| <input type="checkbox"/> Lifetime Membership | \$200.00 |

Windward Orchid News
Windward Orchid Society, Inc.
P.O. Box 23
Kaneohe, HI 96744

Non Profit
Postage Paid
Kaneohe, Hawaii
Permit #48



Introducing the Windward Orchid Society's Officers and Trustees....



President Susan Lim

She's back! Susan is a Lifetime member of the Society and has been a member since 1997. Since joining the Society, Susan has served as past President, Recording Secretary, Director and Exhibition Chairperson. Susan's message to the members is, *"This is your Society and we all need to work together to keep it strong. Working together and getting along well together has always been one of the strengths of the Windward Orchid Society. We've been very fortunate to be relatively free of self-serving backdoor politics that ruin any Society. Open lines of communication and our ability to work well together has made this Society what it is today. Let's continue this legacy and share our experiences, work together as a team, educate our members, and bring into the Society new members."*

Vice-President Dorothy Sakamoto

Dot is a Lifetime member of the society and a member since 1995. She has been an integral part of our Spring Shows. Dot says, *"Orchid societies provide a wide range of education and social activities. Getting involved makes all these opportunities limitless. With my involvement, I have gained lifetime friendships and access to purchasing a wider variety of orchids that I know would not be possible if I were not a member. Many commercial growers started their interest as hobbyist and later turned this interest into a business. I am now retired and sell my orchids part-time."*



Recording Secretary Karen Kim

Karen has been a member of the Society since 1999. From 2003 to 2005, she was the Corresponding Secretary. In addition to her love of orchids, Karen also raises and sells exotic birds.

Treasurer Sheron Harwood

Sheron is a Lifetime member of the Society has been a member of the Society since 1975. In the past, Sheron has held various positions such as President, Vice-President and Trustee. Sheron encourages all members to participate in as much shows as you can and to join in on all the programs.



Corresponding Secretary Rae Ordinado

Rae and her husband Lorenzo joined the Society in 2000 and she has been Membership Chairperson, Trustee and this year's recipient of the Orchidist of the Year award. Rae encourages all members to become active in the Society. Rae says, *"You'll meet so many members who are eager to help and give you advice. Our members have so much orchid knowledge to share with others. So become active and you'll find that your orchid collection will start to grow and grow and you'll make a lot of new friends too!!"*

Director Larry Kamiya

Larry is a Lifetime member of the Society and has been a member since 1990. Larry has held various positions in the Society such as Recording Secretary, Vice-President and Show Chair. Larry's advice to members is, *"Run while you have the chance—orchids are addictive just like drugs! Pot, pot, grow, grow—bloom, bloom!!"*



Trustee Ed Cattret

Ed is a Lifetime member of the Society and has been a member since 1998. After being in the Society for only a year, Ed became a Trustee and has been active on the Board ever since. Ed encourages all members to be active in the Society.

**Trustee David Kagawa**

David is a Lifetime member of the Society and has been a member since the early 1980's. His advice to other members of the Society is to join, join!

Trustee May Kaneshiro

May has been a member of the Society since 1980 and has served as Trustee, Recording Secretary, Show Committee chair, and has been responsible for the Host and Hostesses at our past Spring Shows. Most recently, May has been the corsage lady for our Spring Shows.

**Trustee Adam Kono**

Adam became a member of the Society in 2003 and he says, *"I have admired orchids for some time but if you are like me and just couldn't get them to bloom. Although still with much to learn about orchid culture, with the help from many at the WOS, I have been able to experience the thrill of seeing some of my plants bud, then bloom. So now I'm hooked."*

Trustee Scot Mitamura

Scot attended his first meeting in 1972 at the age of 15. A Lifetime member, Scot has served on the Board for 25 years and has held various positions such as Trustee, Vice-President and Show Chair. Scot's advice to all members is, *"Don't be afraid to repot! Orchids are very strong and sturdy plants."*

**Trustee Grace Nishigaya**

Grace became a member of the Society in 2000 and has been on the Board for the past three years. Grace's advice to the members is to jump in and offer help and to not let any of the old timers intimidate you.

Trustee Curtis Rodrigues

A Lifetime member of the Society, Curtis has been a member since 1989 and served on the Board and as the President. Curtis's advice to members is, *"Stay with the Society, it is a great group. You can learn a lot about orchids and people in general. I have made many good friends and have really enjoyed my time with the Society."*

**Trustee Kathy Tonokawa**

Kathy has been a member of the Society since 1989 and was the Membership Chairperson in the past. Kathy says, *"It's been a lot fun and I've met many people since I started actively coming to the meetings for the past 10 years."*

Trustee Emily Yamada

Emily has been a member of the Society since 1993. She has served as a Trustee, Membership Chairperson, co-chaired shows and has been our Spring Show ticket sales chair for many years.



Membership Chairperson
Ruby Hiraishi



Hospitality Chairperson
Fran Craft