

Windward Orchid News
Windward Orchid Society, Inc.
P.O. Box 23
Kaneohe, HI 96744

RETURN SERVICE REQUESTED

NONPROFIT ORG
U.S. POSTAGE
PAID
Kaneohe, HI
PERMIT NO. 48

Next Membership Meeting is at
7:00 p.m. on August 7, 2019
at King Intermediate School.
This may be your last newsletter
if you haven't renewed your
membership.





Windward Orchid News

Published monthly by the Windward Orchid Society, Inc., a non-profit organization
www.windwardorchidsociety.org

Windward Orchid Society's **NEXT MEMBERSHIP MEETING** will be on **Wednesday, August 7, 2019** at 7:00 p.m. at the King Intermediate School Cafeteria.

Experience Orchids at the Windward Orchid Society - Renew your Membership

Workshop Extravaganza

At our August 7th meeting, we will set up four workshop stations. Feel free to stay with one station or visit as many as time will allow. Here are your choices.

- Pests and How To Get Rid of Them by Sheron Harwood
- Multiplying Your Plants by Walter Hiraishi
- Dividing Your Plants, When and How by Scot Mitamura
- Growing Orchids in Microclimates by Duncan Chun

A Message From Our President

Dear WOS Members,

It was a great July meeting. I would like to thank everyone who came. We were given some great tips on basic orchid growing by our speaker Scot Mitamura. We would also like to thank the members who helped plan, set up and clean up our meetings, as well as those who have been bringing refreshments!

A special thank you to Sheron Harwood for setting up a hands-on repotting orchids experience for our new members and for arranging the viewing of rare orchid books at the UH Manoa Hamilton Library.

We had another successful Ewa Orchid Show. We won 2nd place and garnered 7 awards, thanks to our Display Chairperson, Susan Lim and our WOS members who came out to help.

The last orchid show of the year will be in October and hosted by the Honolulu Orchid Society. Ariel Harwood has volunteered to be our Display Chairperson. We could really use your help with setting up the display, bringing blooming orchids, and clean up after the show.

I won't be at the August meeting, so I ask you to please support our VP Karen Kim, who will be running the meeting.

Finally, our membership survey produced 6 members who will take charge of the refreshments....Yippee!

Aloha,
Craig Nakahara, WOS President

Orchid Repotting Adventure



The Save Robby's Orchids Safari is over. We had 12 new WOS members. Robby and his wife Cathy who graciously let us trash their garage, 2 neighbors and a couple of their friends!!!

THANK YOU SO MUCH to Craig and Dawn for helping me herd the group, I don't know how I would have done it by myself. According to Robby, the group potted over 100 plants...in about 2 hours. Craig asked Robby to send us pictures of the plants in about 2 months.

We all met at lunch after and we answered more questions for another hour. It was great. Robby invited us back in 2 years to repot...I'm not sure about that... I'm exhausted!!!

BUT it was really great for the new members and they were very grateful and appreciative for the experience!!

Craig brought water for everyone and helped with the staking...which I suck at. All in all, it was an awesome day!!! ~ Sheron

Upcoming Events:

◆ **Renew WOS Membership for July 1, 2019 to June 30, 2020.**

◆ **Wednesday, August 7th at 7:00 p.m.**
General Membership Meeting at King School Cafeteria.

◆ **Saturday, August 10th at 9:30 a.m.**
Workshop at Dot's House If you need directions, call 236-4104.

WOS July Orchid Culture Awards



1st Place – Novice Division
Brstdm. Golden Gamine ‘White Knight’
Owner: Josie Rayray



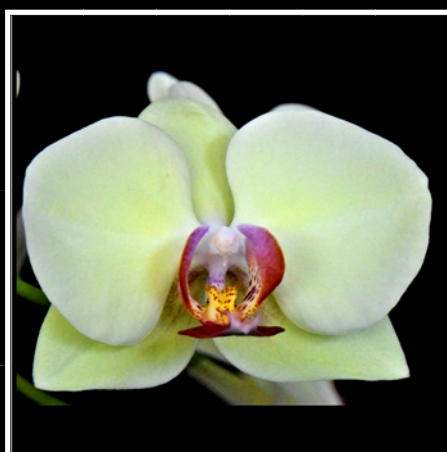
1st Place – Intermediate Division
Neost. Lou Sneary(Neof.faicata ‘Kokakuden’
x Rhy. coelestis ‘Ching Hua Blue’)
Owner: Elaine Higa



1st Place – Masters Division
Blc. Ann Cleo ‘Halona’
Owner: Scot & Karen Mitamura



2nd Place – Novice Division
Pinalia (syn.eria) spicata
Owner: Meldy Villanueva



2nd Place – Intermediate Division
Phal. Hybrid
Owner: Deborah Collins



2nd Place – Masters Division
Den. stratiotes
Owner: Walter and Ruby Hiraishi

Orchid Tip of the Month by Scot Mitamura

I often get asked, “what are our resources for finding the names of our orchids”? Today in our world of technology, most of us have smart phones, so we can access the internet where we can find just about anything. Remember in the old days, we used to use books, and for the orchid folks, our “Orchid Bible” was the Sander’s List of Orchid Hybrids. These heavy books were normally published every five to ten years (depending on the number of hybrids registered) by the Royal Horticultural Society in Kew England. In fact even today they remain the international registrar for all orchid hybrids. So researching a hybrid and it’s genealogy, or species was a very time consuming thing, often requiring a large table and multiple volumes of Sanders. For the species we had an encyclopedia written by Alex Hawkes, it was my go to book, because it had photos! Other great resources were our American Orchid Society journal and in Hawaii, our Na Okika O Hawaii bulletin, which was jointly published by the Pacific Orchid Society and Honolulu Orchid Society.

Fast forward to today, our orchid information is at our fingertips. One of the best resources is a for pay computer software called Orchid Wiz. This database/encyclopedia contains all the information from nearly 200,000 orchid species and hybrids you may ever need about your orchid. Information such as orchid genealogy, photographs and illustrations, awards, and cultural information. But unfortunately, I don’t always have my computer with me, so I rely on my smart phone and go online to Bluenanta.com. They are trying offer what Orchid Wiz does, but much scaled down. Their greatest asset is that they are up to date with orchid registrations and genealogy. Still not bad for a free service. Searching Google images is also a great tool and comes in handy when you may only know a common name of the orchid you want to identify. Sometimes I will check it first to get close and then go to Bluenanta or Orchid Wiz. If you can wait, take a photo and bring it or better yet the orchid to a meeting and usually someone will recognize what it is. It makes us old timers feel important whenever we can help. ~ Scot



Ewa Orchid Society Show Team

For the Ewa Orchid Show "Monarch Amongst the Orchids" our display won 2nd Place! A success because of membership contributions of blooming flowers, from Lynette Logan (new member), Duncan Chun, Deborah Collins, Fran Craft, Larry Kamiya, Wendy Saito, Award winners: Elaine Higa, Walter Hiraishi, Bianca Kam, and Scot Mitamura.

The Ewa Show is one of the hardest shows to create because not many orchids bloom during the month of July and weather conditions don't help sometimes.

I'm very appreciative of everyone above who donated plants for our display, and the following people who assisting with the set-up and/or breakdown: Dawn Bonak, Wanda China (new member), Billy Craft, Ariel Harwood, Sheron Harwood, David Kam, Maxine Lee, Al Lindo, Karen Mitamura, Deborah Collins, Craig Nakahara, Nevaeh Rivera (youngest helper). Also, thank you to Grace Takebayashi for donating the 100 butterflies on wires. They really added to the display.

Mahalo for everyone's support and we look forward to seeing more new members and blooming plants in the Honolulu Orchid Show in October. ~ Susan

Ewa Orchid Society Show -WOS Awards

WOS—2nd Place Display Award
Elaine Higa— Best White Cattleya
Walter Hiraishi— Best White Dendrobium and
 Best Other Color Dendrobium and
 Best Miniature—Species
Bianca Kam—Best Grammatophyllum
Scot and Karen Mitamura— Best Miltonia and
 Best Oncidium and
 AOS Merit Award AM 82 points for
 Brs.Fritz Boedker

CONGRATULATIONS ALL!!!

Aloha and Welcome to Our New Members

Wanda China and Lynette Logan

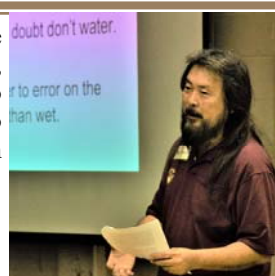
Many Thanks to Our Installation Banquet Contributors!!

Klipper Club, MCBH, Carmela Orchids, Hawaii Pacific Orchids, Walter Hiraishi, Roy Andrade, Fran Craft, Cellina Uyenuten, Ariel Harwood, Dawn Bonak, Scot Mitamura, H&R Nurseries, Hilo Orchid Farm, Ruby Hiraishi, Betty Oshima, Gina Nakahara, Taylor Nakahara, Sheron Harwood and Susan Lim.

We all had a great time and it wouldn't have happened without all of you. Thank you sincerely.

At our July meeting we had 68 members, 4 guests, and 2 new members who learned the Keys to Growing Orchids from Horticulturist, Scot Mitamura.

Mahalo, Scot!



SPRING SHOW 2020

General Store - Toni Walker

Donations are being accepted all year round. When you have an item to donate, please don't wait. Text Toni at 808-292-1407.

Signs & Banners - Fred Collins

We are looking for members willing to put a yard sign or a banner on their property. Can you help? Text Fred at 808-294-7475.

Orchid Doctor - If you have questions about your orchids, or have orchids that are not doing well, please bring them early (7:00 p.m.) to the General Membership meeting and our orchid doctor Scot, will gladly identify the problem and try to answer your questions.

General Questions - For questions about the Windward Orchid Society, see Karen Kim during our General Membership Meeting.

Refreshment Contributions - **We are in need of a new Hospitality/Refreshments Chair** to organize this for us. In the meantime, please bring your own beverage and if you bring snacks to share, put it where it usually would be and please take home any extras at the end of the meeting.

WOS Cookbook II— Send your tasty recipes to Wendy wpathways@gmail.com.

**WOS
Corner**

WOS Officers 2019-2020: President *Craig Nakahara* Vice-President *Karen Kim* Recording Secretary *Dawn Bonak*
 Treasurer *Ariel Harwood* Corresponding Secretary *Deborah Collins* Trustees: (2019-2022) *Susan Lim* *Toni Walker*
Fred Collins (2018-2021) *Duncan Chun* *Wendy Saito* *Dot Sakamoto* (2017-2020) *Steve Canham* *C.J. Kalopodes*
Scot Mitamura Director *Sheron Harwood* Membership *Grace Nishigaya* Hospitality/Refreshments Vacant

Mail correspondence to: Windward Orchid Society, Inc. P.O. Box 23 Kaneohe, Hawaii 96744
 The WOS meets on the first Wednesday of every month at the King Intermediate School Cafeteria (except in June & December).